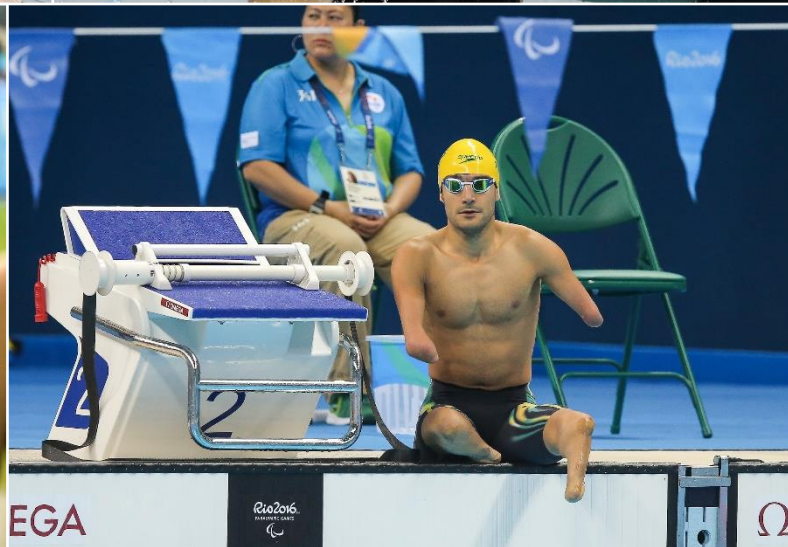
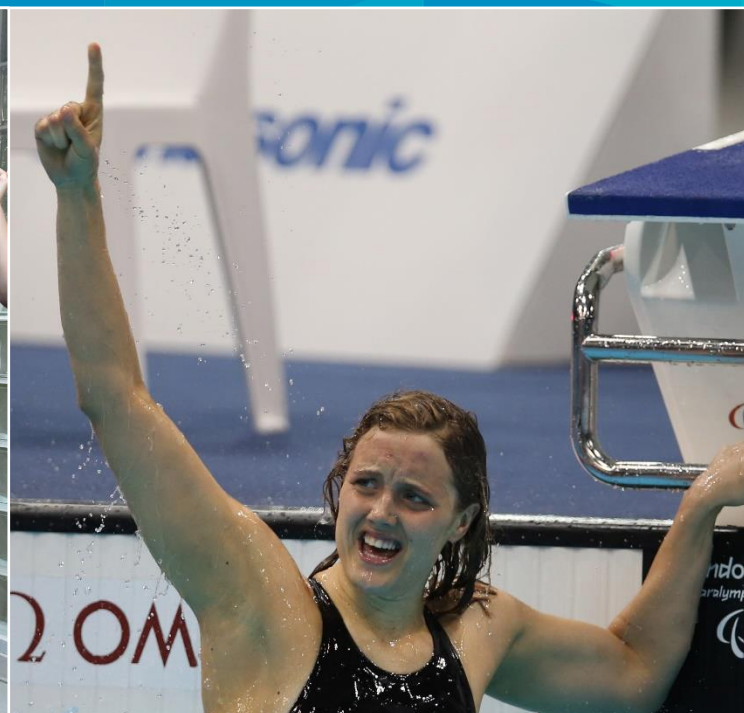


CLASSIFICATION POLICY

Version 1.0 2022



**HANCOCK
PROSPECTING**

PRINCIPAL PARTNER

SPORTAUS



MAJOR PARTNERS



CLASSIFICATION PARTNERS



Table of Contents

TERMINOLOGY	4
AUSTRALIAN SWIMMING CLASSIFICATION SYSTEM OVERVIEW	5
STAKEHOLDERS IN THE CLASSIFICATION POLICY AND THEIR ROLES	5
<i>The Board of Swimming Australia (SA).....</i>	<i>5</i>
<i>National Classification System Partners</i>	<i>5</i>
Paralympics Australia (PA)	5
Sport Inclusion Australia (SIA)	5
Deaf Sports Australia (DSA)	5
Transplant Australia (TA).....	5
State and Territory Swimming Associations	6
School Sport Australia	6
Swimming Administrators.....	6
Classifiers and Eligibility Officers.....	6
WHO THIS POLICY APPLIES TO	6
PURPOSE OF THIS POLICY	6
CLASSIFICATION POLICY.....	6
Physical Impairment Classification.....	6
Visual Impairment Classification	7
Intellectual Impairment Classification	7
Hearing Impairment Classification	7
Transplant Classification	7
Transition Classification	8
<i>Exceptions to the Swimming Rules</i>	<i>8</i>
<i>Sport Class Status</i>	<i>8</i>
<i>Swimmers with Multiple Classifications</i>	<i>8</i>
<i>National Swimming Classification Master List</i>	<i>9</i>
<i>Swimming Australia Classification Card</i>	<i>9</i>
<i>International Classification.....</i>	<i>9</i>
<i>Dispute Resolution Process.....</i>	<i>10</i>
<i>Additional Information</i>	<i>10</i>
APPENDIX A – IPC SWIMMING CODES OF EXCEPTION	11
APPENDIX B – WPS SWIMMING CODES OF EXCEPTION	12
APPENDIX C – NATIONAL SPORT CLASS STATUS	13

TERMINOLOGY

Assessment	Specific clinical procedure conducted during athlete evaluation processes
Classification	Refers to the system of grouping athletes based on impact of impairment
Classification System Partners	Organisations with a responsibility for administering the swimming classification systems in Australia
DSA	Deaf Sports Australia
Eligibility Criteria	Requirements under which athletes are evaluated for a Sport Class
Evaluation	Process of determining if an athlete meets eligibility criteria for a Sport Class
HI	Hearing Impairment
ICSD	International Committee of Sports for the Deaf
II	Intellectual Impairment
Inclusion	General term that refers to strategic initiatives that address engagement of targeted population groups that typically face disadvantage, including people with disability
IPC	International Paralympic Committee
Master List	The list of all participants that have undertaken classification assessment nationally
Multi Class (MC)	Competition format whereby swimmers of different classes compete in the same event (Formerly Multi Disability)
MC Swimmer	Classified swimmer who competes in domestic Multi Class competition (formerly SWD or AWD)
NPC	National Paralympic Committee
NSO	National Sports Organisation
PA	Paralympics Australia
PI	Physical Impairment
SA	Swimming Australia
SIA	Sport Inclusion Australia
Sport Class	The group a swimmer competes in for respective events
SSA	State and Territory Swimming Association
Swim Central	The national operating system for clubs and members
TA	Transplant Australia
VI	Vision Impairment
Virtus	International Federation for Sport for Para-athletes with an Intellectual Disability (previously Inas)
WPS	World Para Swimming, the international federation for Paralympic swimming
WTGF	World Transplant Games Federation

AUSTRALIAN SWIMMING CLASSIFICATION SYSTEM OVERVIEW

The Australian Swimming Classification System provides a structure for competition for swimmers with disability. Classification groups athletes according to the impact of their impairment on their ability to compete in the sport of swimming. The purpose of classification in swimming is to minimise the impact of eligible impairment types on the outcome of competition so that athletes who succeed in competition are those with best anthropometry, physiology and psychology and who have enhanced them to best effect. In Australia, swimming classification is designed to ensure a fair environment for competition at all levels from club through to Australian Championships.

SA will promote and support the implementation of this policy through the maintenance of relationships with Classification System Partners and Stakeholders, development of strategy to drive continued improvement of classification systems, development of resources and information that educate the swimming community about classification system eligibility requirements and athlete evaluation process.

STAKEHOLDERS IN THE CLASSIFICATION POLICY AND THEIR ROLES

The Board of Swimming Australia (SA)

Endorsement of the Classification Policy.

National Classification System Partners

Swimming Australia recognises the following National Disability Sports Organisations with a responsibility for the management of classification in Australia:

Paralympics Australia (PA)

PA is the peak body in Australia representing Paralympic Sport. As the National Paralympic Committee (NPC) and signatory to the International Paralympic Committee (IPC) Athlete Classification Code (2015), PA is ultimately responsible for all Paralympic classification processes and procedures occurring within Australia. Paralympic classification includes the systems for swimmers with a physical, visual and intellectual impairment.

Sport Inclusion Australia (SIA)

SIA is the peak body in Australia representing the needs of athletes with intellectual impairment. SIA is responsible for managing the national eligibility process for athletes wishing to compete within the intellectual disability classification. SIA is the Australian Member organisation of the International Federation for sport for para-athletes with an intellectual disability (Virtus). Virtus manages and oversees international eligibility for athletes with intellectual impairment.

Deaf Sports Australia (DSA)

DSA is the peak body in Australia representing sport for people with a hearing impairment. DSA is responsible for the conduct of the Australian Deaf Games and manages teams to represent Australia at the Deaflympic Games. DSA is ultimately responsible for determining eligibility for athletes with hearing impairment in Australia. DSA is the Australian Member Organisation of the International Committee of Sports for the Deaf (ICSD). ICSD manages and oversees international eligibility for athletes with hearing impairment.

Transplant Australia (TA)

TA is a national body representing the needs of transplant recipients, those awaiting transplant, living donors, donor families and those working in the organ and tissue donation and transplantation sector. TA is responsible for the conduct of the Australian Transplant Games and manages teams to represent Australia at the World Transplant Games. TA is ultimately

responsible for determining eligibility for athletes who have received a transplant in Australia. TA is the Australian member organisation of the World Transplant Games Federation (WTGF). WTGF is responsible for the conduct of the World Transplant games and manages international eligibility criteria for athletes who have received a transplant.

State and Territory Swimming Associations

Assist in the periodic review of the Classification Policy and implement the Classification Policy at State and Territory level. Facilitate and ensure access to classification services and information for members and non-members in State and Territory competition pathways.

School Sport Australia

Assist in the periodic review of the Classification Policy and implement the Classification Policy in Australian School Sport swimming. Facilitate and ensure access to classification services and information for participants in the school sport swimming competition pathway.

Swimming Administrators

The club, regional and State/Territory and national administrators provide the direct link for information relating to implementing the Classification Policy and processes.

Classifiers and Eligibility Officers

Qualified individuals who are responsible for the conduct of Athlete Evaluation processes and determine eligibility of athletes within their respective classification systems. SA only recognises classifications where athletes are assessed by individuals accredited or endorsed by the relevant Classification System Partner.

WHO THIS POLICY APPLIES TO

This policy applies to all swimmers in Australia with physical, vision, intellectual or hearing impairment and swimmers who have received a transplant who intend to compete in Multi Class events or events where swimming classification is required.

PURPOSE OF THIS POLICY

The purpose of this Classification Policy is to clearly define the systems of classification adopted by SA and recognise the role of system partners. It will ensure the ongoing provision of a consistent and sustainable swimming classification system nationally.

This policy may be amended from time to time by SA's Classification Manager.

CLASSIFICATION POLICY

1. All Australian swimmers with physical, visual, intellectual or auditory impairments and those who have received a transplant should have access to classification opportunities appropriate to their level of competition.
2. As the National Sports Organisation responsible for swimming in Australia, SA accepts its role in ensuring swimming classification is enforced in accordance with national and international standards, as determined by the rules and regulations of the relevant International Federations and national classification system partner policies.

Physical Impairment Classification

- 2.1.1. SA adopts and adheres to WPS Swimming classification rules and regulations for swimmers with physical impairment.

- 2.1.2. SA acknowledges the PA Classification Policy where it relates to physical impairment classification and agrees to cooperate with the PA in delivery of classification services under the terms of that policy.
- 2.1.3. For the purpose of multi class swimming competition swimmers must be eligible under the WPS Eligibility Regulations and PA Eligibility Policy and will be designated as Sport Class S/SB1-10.

Visual Impairment Classification

- 2.1.4. SA adopts and adheres to WPS Swimming classification rules and regulations for swimmers with vision impairment.
- 2.1.5. SA acknowledges the PA Classification Policy where it relates to vision impairment classification and agrees to cooperate with the PA in delivery of classification services under the terms of that policy.
- 2.1.6. For the purpose of multi class swimming competition swimmers must be eligible under the WPS Eligibility Regulations and PA Eligibility Policy and will be designated as Sport Class S/SB11-13.

Intellectual Impairment Classification

- 2.1.7. SA adopts and adheres to WPS Swimming classification rules and regulations for swimmers with intellectual impairment where it relates to Sports Specific Classification for swimmers with intellectual impairment in WPS swimming competition.
- 2.1.8. SA adopts and adheres to the Virtus Eligibility and Classification Policy where it relates to Primary Eligibility for international competition.
- 2.1.9. SA adopts and adheres to the Sport Inclusion Australia Eligibility Policy where it relates to national competition and agrees to cooperate with Sport Inclusion Australia in delivery of classification services under the terms of that policy.
- 2.1.10. SA acknowledges the PA Classification Policy where it relates to intellectual impairment classification and agrees to cooperate with the PA in delivery of classification services under the terms of that policy.
- 2.1.11. For the purpose of multi class swimming competition swimmers must be eligible under the WPS Eligibility Regulations (S/B14) and SIA Eligibility Policy (S/B14, 18 and/or 19) and will be designated as Sport Class S/SB14, 18 or 19.

Hearing Impairment Classification

- 2.1.12. SA adopts and adheres to ICSD Eligibility Regulations for swimmers with hearing impairment.
- 2.1.13. SA acknowledges the DSA Eligibility Policy and agrees to cooperate with DSA in delivery of classification services under the terms of that policy.
- 2.1.14. For the purpose of multi class swimming competition swimmers must be eligible under the ICSD Eligibility Regulations and DSA Eligibility Policy and will be designated as Sport Class S/SB15.

Transplant Classification

- 2.1.15. SA adopts and adheres to the eligibility criteria outlined in the World Transplant

Games (WTG) Sport Rules determined by the WTGF.

- 2.1.16. SA acknowledges the Australian Transplant Games (ATG) Eligibility Policy determined by TA and agrees to cooperate with TA in the delivery of classification services under the terms of that policy.
- 2.1.17. For the purpose of multi class swimming competition swimmers must be eligible under the WTG Sports Rules and ATG Eligibility Policy and will be designated as Sport Class S/SB16.

Transition Classification

- 2.1.18. Swimmers who have previously been classified in the S1-16 classification range as having one or more of the above mentioned impairments and are currently not eligible, or have the potential to be eligible in the future, as determined by Swimming Australia.
- 2.1.19. For the purpose of multi class swimming competition, eligible swimmers will be designated as Sport Class S/SB17.

Exceptions to the Swimming Rules

- 3.1. Swimmers are entitled to receive exceptions to the swimming rules and other considerations based on their classification. Exceptions prevent classified swimmers from being disqualified during Multi Class (MC) competition or in other competition where classifications and rule exceptions are observed.
- 3.2. Rule exceptions adopted from and applied in accordance with the WPS Classification Rules and Regulations however SA reserves the right to modify their application to suit the national competition context.
- 3.3. Rule exceptions are determined during the Athlete Evaluation and/or Eligibility process and are identified by a system of codes known as the Swimming Codes of Exceptions (Appendix A and Appendix B).

Sport Class Status

- 4.1. All classifications are allocated a Sport Class Status which indicates conditions of a swimmers classification (Appendix C).

Swimmers with Multiple Classifications

- 5.1. Swimmers with more than one impairment type may be eligible for multiple sport classes.
- 5.2. In competition swimmers may only compete with one sport class. The classification must be nominated when entering the meet and may not change throughout the meet.
- 5.3. In the case of rule exceptions only the rule exceptions associated with the nominated class will apply.
- 5.4. Where a swimmer has qualified to progress to a subsequent level of competition

the Classification with which they achieved qualification must be maintained through to the subsequent competition.

National Swimming Classification Master List

- 6.1. SA manages the official Master List of swimmers classification details. SA is responsible for making public and providing classification information relevant to the conduct of competition to appropriate parties such as the state swimming associations, school sport or disability sport organisations.

Swimming Australia Classification Card

- 7.1. The Swimming Australia Classification Card provides an official record of an individual competitor's classification details. The Classification Card is located in Swim Central as the swimmers membership card. The Classification Card proves eligibility to compete in Multi Class competition or other competition where classifications and rule exceptions are enforced.
- 7.2. Conditions of use:
 - i. Will be issued by SA through the Swim Central portal
 - ii. Will be issued to current financial SA members in good standing only
 - iii. Will be issued to swimmers with an eligible Provisional or National Level classification with status Review, Review with Fixed Review Date or Confirmed only
 - iv. Will identify a swimmers authorised classification details as recorded in the National Swimming Classification Master List
 - v. Must be presented to meet officials prior to MC competition, unless otherwise stated
 - vi. Swimmers not holding a Classification Card or whose class cannot be verified in the National Classification Master List must compete under the swimming rules with no exceptions
 - vii. Will be valid for a period of the swimmers affiliated club membership or until the date of a swimmers classification review (if applicable)
- 7.3. The SA Classification Card will carry the following information:
 - i. Athlete Name
 - ii. Sport Classes
 - iii. Sport Class Status
 - iv. Codes of exceptions (if applicable)

International Classification

- 8.1. SA will identify and endorse athletes at its discretion to be nominated for WPS international classification.
- 8.2. SA in cooperation with the PA will manage all aspects of the WPS International classification process for identified athletes.

Dispute Resolution Process

- 9.1. SA will facilitate resolution of disputes relating to classification outcome and/or evaluation process in consultation with Classification System Partners and in accordance with the relevant classification Policy, Rules and Regulations described in this policy.
- 9.2. All disputes directed to SA will be treated as confidential. Parties to the dispute shall not disclose information relating to the dispute or the proceedings to any person or entity outside those directly required to assist in the resolution which may include but is not limited to:
 - i. Swimmer and their nominated representative(s)
 - ii. Certified Classifiers and/or Eligibility Officer
 - iii. SA Employees
 - iv. Classification System Partner Representative(s)
 - v. Sport, medical or scientific consultants engaged for the purpose of the dispute resolution
 - vi. Legal counsel

Additional Information

[Get Classified](#)

[Multi Class Point Score Guidelines](#)

[Swimming Rules](#)

[Privacy Policy](#)

[Safe Sport Framework](#)

APPENDIX A – IPC SWIMMING CODES OF EXCEPTION

STARTS	
A	Assistance required
B	Blackened/opaque goggles
E	Unable to grip for backstroke start
H	Hearing impairment, light or signal required
T	Tappers
Y	Starting device
DURING SWIM	
0	Nil – no exceptions
1	One hand start
2	Right hand touch
3	Left hand touch
4	Right hand touch with simultaneous intent to touch with other
5	Left hand touch with simultaneous intent to touch with other
6	Simultaneous intent to touch
7	Part of upper body must touch
8	Right foot must turn out
9	Left foot must turn out
12	Leg drag or show intent to kick
+	Dolphin kick is able to be performed (illegal in breaststroke)
STROKES	
FREE	No Exceptions
BACKSTROKE	Only exception '1' may apply
BUTTERFLY	Exceptions '2-7' may apply
BREASTSTROKE	Exceptions '2-12' may apply

Please note: In the 2017/18 season WPS made changes to the Codes of Exception as detailed at <https://www.paralympic.org/swimming/rules-and-regulations>. SA is currently working towards transitioning the National Classification System and Australian Swimming Rules to comply with the new codes of exceptions. The previous Codes of Exceptions will remain in use for all Australian domestic competition until further notice. Any questions or concerns may be directed to classification@swimming.org.au.

APPENDIX B – WPS SWIMMING CODES OF EXCEPTION

STARTS	
H	Hearing Impairment - light or signal required
A	Assistance required
E	Unable to grip for backstroke start
Y	Starting device
T	Tapper
B	Blackened/opaque goggles
DURING SWIMMING	
1	One hand start
2	Breaststroke - One Hand Touch
3	Breaststroke - Simultaneous Intent to Touch
4	Butterfly - One Hand Touch
5	Butterfly - Simultaneous Intent to Touch
7	Part of upper body must touch
8	Right foot must turn out
9	Left foot must turn out
12	Leg drag or show intent to kick
+	Butterfly kick is able to be performed (illegal in Breaststroke)
STROKES	
FREE	No Exceptions
BACKSTROKE	Only exception '1' may apply
BUTTERFLY	Exceptions '2-7' may apply
BREASTSTROKE	Exceptions '2-12' may apply

APPENDIX C – NATIONAL SPORT CLASS STATUS

Sport Class Status	Applicable Classes	Level of competition	Athlete Evaluation Process	Conditions
Provisional (PrR)	1 - 10 11 - 13	Club School District Regional State*	Provisional National Athlete Evaluation, either remote or face to face without being reviewed by a full classification panel.	Provides an indication of class only Valid for 12months only Not eligible for records, rankings or team selections *Determined by the State or Territory Swimming Association, entry requirements for each competition should be checked.
National Review (NR)	1 - 10 11 - 13 17*	Club School District Regional State National	National Athlete Evaluation, conducted face to face by a full classification panel consisting of appropriate accredited classifiers.	Classification panel may allocate a review period Swimmer is required to undergo athlete evaluation again in the future in situations such as: <ul style="list-style-type: none"> • New athlete to the sport • Borderline classifications • Fluctuating disability • Athlete has not reached physical maturation • Athlete has sustained their condition less than 2 years previously Swimmer cannot be reviewed by a classification panel until their allocated review date, unless the classification rules change, or in other exceptional circumstances *Determined by the meet organiser, entry requirements for each competition should be checked
National Confirmed (NC)	1 - 10 11 - 13 14 15 16 17*	Club School District Regional State National	<u>Classes 1-10 & 11-13:</u> National Athlete Evaluation, conducted face to face by a full classification panel consisting of appropriate accredited classifiers. <u>Classes 14, 15 & 16:</u> National Athlete Evaluation by completing the relevant official Eligibility Application Form and reviewed by appropriate eligibility officers endorsed by Classification System Partners.	Swimmer cannot be reviewed by a classification panel again, unless the classification rules change, or in other exceptional circumstances *Determined by the meet organiser, entry requirements for each competition should be checked

For more detail please refer to the relevant Rules and Policies referred to in section 2.0 of the SA Classification Policy

Enquiries may be directed to:

Swimming Australia

National Classification

classification@swimming.org.au



swimming.org.au